



# SONAPUR COLLEGE (AUTONOMOUS)

Department of Geography

6 MONTHS CERTIFICATE COURSE IN

# REMOTE SENSING, GIS, GPS AND DIGITAL SURVEYING

Theory + Practical | Total Marks: 200

## COURSE HIGHLIGHTS

- Hands-on training in RS, GIS, GPS and Digital Surveying
- Practical oriented learning with real-world applications
- Industry-relevant skills for careers in mapping, analysis & geospatial
- Assignments, field work, projects & digital mapping
- Certificate from Sonapur College (Autonomous)

## DURATION

6 Months  
(Theory + Practical)

## REGISTER NOW!

Limited seats.  
Enroll today for  
a better tomorrow!

## LEARN. ANALYZE. MAP. VISUALIZE.

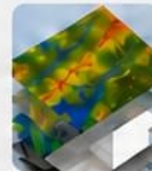
From Satellite Images to Professional GIS Projects



## WHAT YOU WILL LEARN



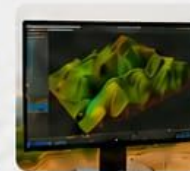
SATELLITE  
IMAGE  
INTERPRETATION



GIS  
ANALYSIS &  
MAPPING



DIGITAL  
SURVEYING &  
DATA ACQUISITION



3D ANALYSIS  
WITH  
PHOTOGRAMMETRY  
BASICS

## CONTACT US

- +91 99546 46436
- +91 86382 46794
- +91 81339 87262
- +91 78966 15452

## EMPOWERING MINDS, MAPPING THE FUTURE

Learn Today, Lead Tomorrow with Geospatial Skills.

## HISTORY OF THE DEPARTMENT

- Established on 2nd August, 1991 with H.S course.
- Degree (Pass) course started in 1993; Major course launched in 2000.
- Eminent faculty and experts contributed to academic growth.
- Post Graduate course started in 2018.
- Seven batches have successfully passed out from 2020 - 26.



## TIME SCHEDULE

- 8:00 - 9:00 a.m.
- 2:00 - 5:00 p.m.
- On Saturday: 2:00 - 4:00 p.m.

• SUNDAY WILL BE PRACTICAL CLASS



## PLACEMENT OPPORTUNITIES

Placement opportunities will be given from different companies and NGOs for eligible and deserving candidates.

## COURSE COMMITTEE



Chief Adviser:  
Principal, Sonapur College (Autonomous)



Head Coordinator:  
Head, Department of Geography



Co-Coordinator:  
Ms. Kirti Rupa Das



Members:  
• Dr. Asraf Ali  
• Ms. Sikhaiyoti Das  
• Ms. Anamika Saikia

## GIS COURSE FEE STRUCTURE

- Admission Fee: Rs. 2,000
- Course Fee: Rs. 1,000 × 6 months = Rs. 6,000
- Examination & Certificate Fee: Rs. 2,000
- Laboratory & Practical Fee: Rs. 2,000
- Study Material & Training Manual: Rs. 2,000
- Miscellaneous and Room Allotment Fee: Rs. 1,000

**TOTAL AMOUNT: RS. 15,000**